

From: "High School Musical"

When There Was Me and You

by

JAMIE HOUSTON

Published Under License From

Walt Disney Music Publishing

© 2005 Walt Disney Music Company
All Rights Reserved Used by Permission

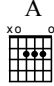
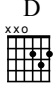
Authorized for use by *Camille Taylor*


NOTICE: Purchasers of this musical file are entitled to use it for their personal enjoyment and musical fulfillment. However, any duplication, adaptation, arranging and/or transmission of this copyrighted music requires the written consent of the copyright owner(s) and of Walt Disney Music Publishing. Unauthorized uses are infringements of the copyright laws of the United States and other countries and may subject the user to civil and/or criminal penalties.

WHEN THERE WAS ME AND YOU

Words and Music by
JAMIE HOUSTON

Slowly

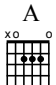
A  D 



It's fun - ny when _ you find _ your - self _

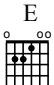


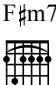

mp

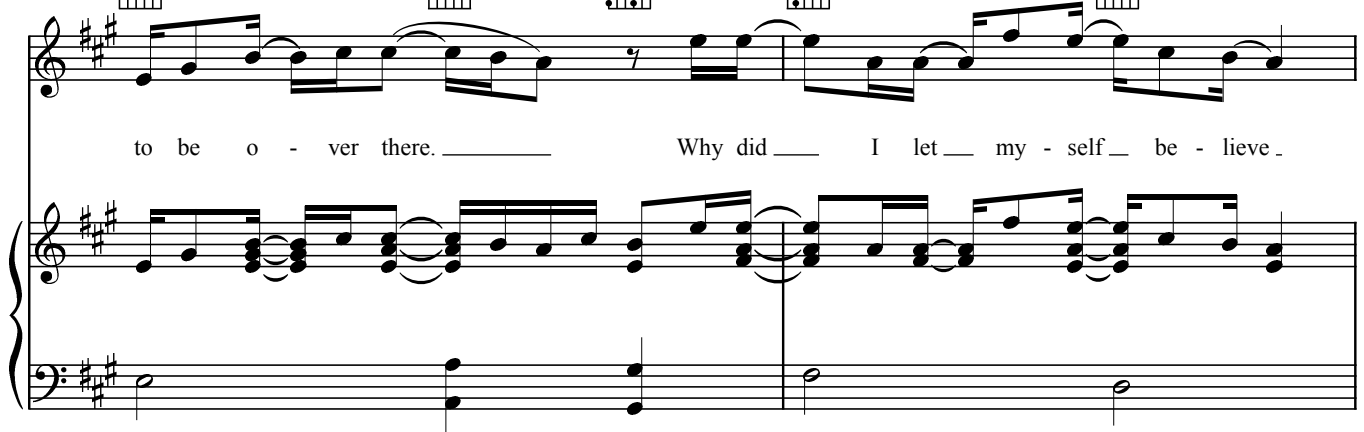
With pedal

E  A  D 



look - ing from _ the out - side. I'm stand - ing here, _ but all _ I want _ is

E  A  E/G#  F#m7  Dsus2 



to be o - ver there. _____ Why did _ I let _ my - self _ be - lieve _



E



A



E/G#



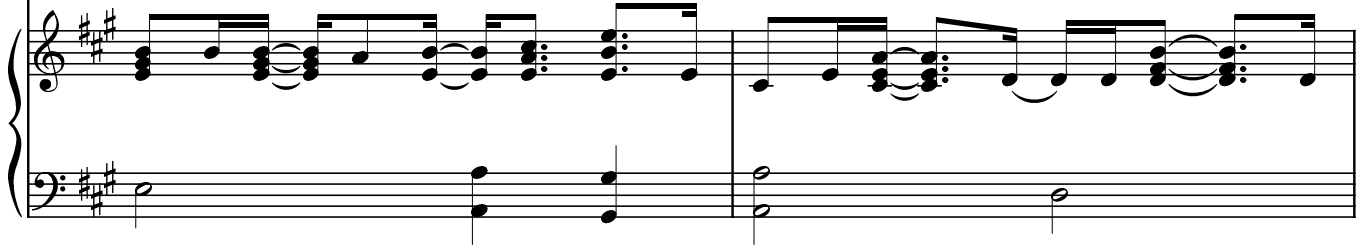
A



D



mir - a - cles _ could hap - pen? 'Cause now I have _ to _ pre - tend _ that



E



A



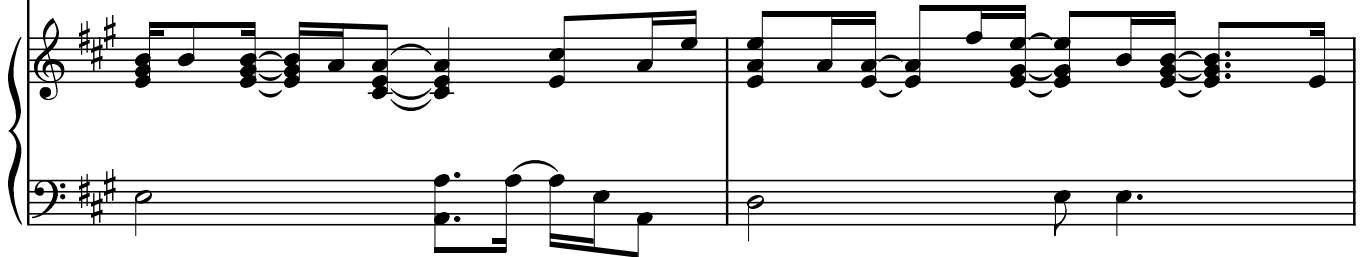
Dsus2



E



I don't real - ly care. _ I thought you were _ my fair - y tale, _ my



A



A/G#



F#m



F#m/E



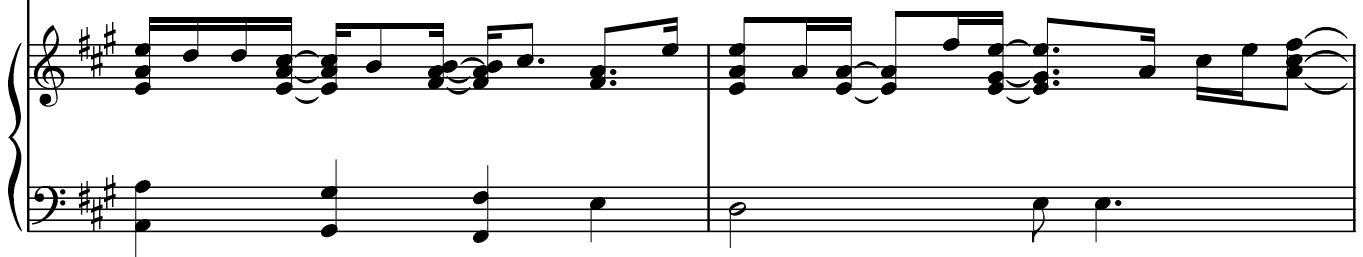
Dsus2



E



dream _ when I'm _ not sleep - ing, a wish up - on _ a star _ that's com - ing true. _



F#m Dsus2 E

But ev - 'ry-bod - y else _ could tell _ that

A A/G# F#m F#m/E D5

I con - fused _ my feel - ings with _ the truth, _ when there was me _ and you. _

E B E

I swore I knew _ the mel - o - dy

F# B E

that I heard _ you sing - ing. And when you smiled, _ you made _ me feel _ like

F#

B

F#(add4)/A#



I could sing a - long. But then

G#m7

E

F#

B

F#/A#



— you went and changed the words; — now my heart is emp - ty. I'm

B

E

F#

B

on - ly left with used to be's — and once up - on — a song. — Now, I know —

E

F#

B

B/A#

G#m

G#m/F#



— you're not — a fair - y tale, — and dreams were meant for sleep - ing, and

E F# G#m

wish-es on a star just don't come true. 'Cause now, _

E F# B B/A# G#m G#m/F#

e - ven I can tell that I con-fused my feel - ings with the truth, _

E5 F#

be-cause I liked the view when there was me and you. _

D A

I can't be - lieve that I could be so blind. It's like you were float-

C#m7



D



- ing while I was fall - ing, and I did-n't mind,

A



F#7



be-cause I liked the view,

G#m



E(add2)



ooh. I thought you felt it too,

F#



B(add2)



when there was me and you.

rit.